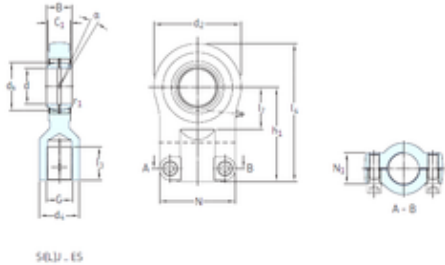


SKF SIQG40ES plain bearings



Bearing No. SIQG40ES

Bore Diameter	40 mm
d	40 mm
d2	90 mm
d4 max.	47 mm
dk	53 mm
h1	97 mm
l3 min.	46 mm
l4 max.	143 mm
l7 min.	40 mm
r1 min.	0,6 mm
B	40 mm
C1 max	34 mm
N max	81 mm
N1 max	28 mm
Thread (G)	M33x2 Tolerance 6H
Angle	4 °
Weight	2 Kg
Basic dynamic load rating (C)	100 kN

SIQG40ES Bearing 2D drawings and 3D CAD models